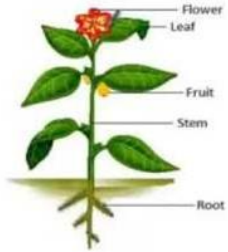
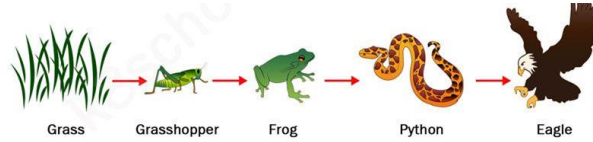


Parts of a Plant



Plants large or small have the same basic structure. **Flower**
Stem
roots



A five linked food chain

Food chains; each plant or animal has a place in the food chain. Energy in the **food chain** follows the arrow.

Knowledge Organiser

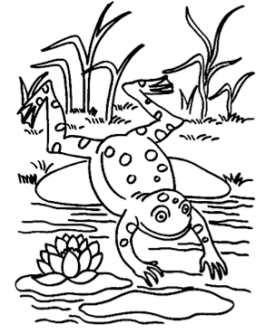
Habitats are; the natural home or environment of an animal, plant, or other organism.

Are plants important?

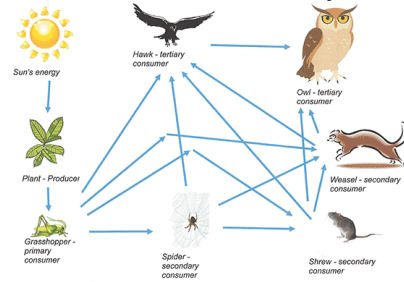
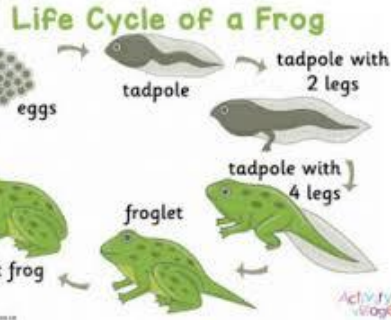
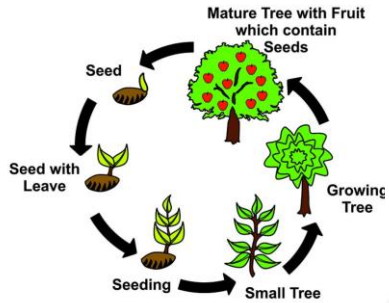
Food webs; plants and animals are linked to each other in a complicated manner.

Both plants and animals have

life cycles.



PLANT Life Cycle



Eyes on top of head

Dark green colour

Webbed feet

Strong back legs

Adaptation is; the process of change by which an organism or species becomes better suited to its environment.

Plants and animals are sorted by **classification** keys.

Mouse **mammal**

Bee **insect**

Snake **reptile**

