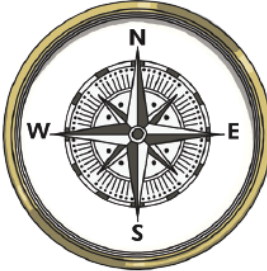
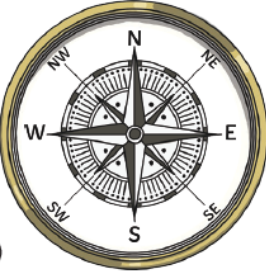


Key Vocabulary







atlas	A collection of maps often of each country in the world.
compass	A tool used for showing direction.
digital map	A map that uses technology such as a satnav.
easting	The numbers used in a grid reference that run west to east.
grid references	The numbered squares on a map used to locate a place.
National Grid	A system used to split Great Britain into 100km squares.
northing	The numbers used in a grid reference that run south to north.
Ordnance Survey maps	Detailed maps of Great Britain where each square represents 1km squared (1km ²).
symbols	Small pictures, letters or lines that represent a feature.

Compass Points

Four-Point Compass		Eight-Point Compass	
N - north		north (N)	
E - east		north-east (NE)	
S - south		east (E)	
W - west		south-east (SE)	
		south (S)	
		south-west (SW)	
		west (W)	
		north-west (NW)	

Symbols

- Maps use **symbols** instead of words to label real-life features.
- A key on the map tells you what the **symbol** means.

	Nature Reserve		Cycle Trail		Footpath
	Motorway		Train Station		Place of Worship

Key Vocabulary	
asexual reproduction	One parent is needed to create an offspring, which is an exact copy of the parent.
fertilise	The action of fusing the male and female sex cells in order to develop an egg.
gestation	The length of a pregnancy.
life cycle	The journey of changes that take place throughout the life of a living thing including birth, growing up and reproduction .
metamorphosis	An abrupt and obvious change in the structure of an animal's body and their behaviour.
pollination	The transfer of pollen to a stigma to allow fertilisation .
reproduction	The process of new living things being made.
sexual reproduction	Two parents are needed to make offspring which are similar but not identical to either parent.

Humans develop inside their mothers and are dependent on their parents for many years until they are old enough to look after themselves.



Amphibians such as frogs are laid in eggs then, once hatched, go through many changes until they become an adult.



Some animals, such as butterflies, go through **metamorphosis** to become an adult.



Birds are hatched from eggs and are looked after by their parents until they are able to live independently.

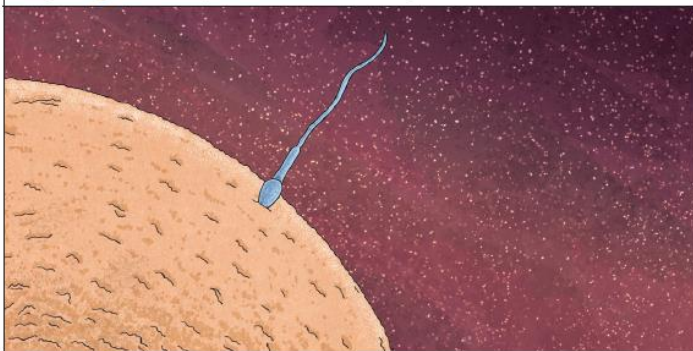


Some living things, such as plants, contain both the male and female sex cells. In others, such as humans, they contain either the male or female sex cell.

Reproduction in mammals

Mammals use **sexual reproduction** to produce their offspring.

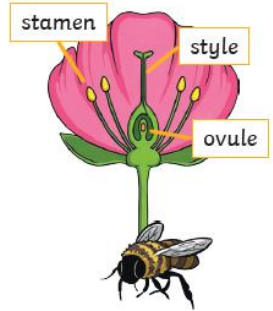
- The male sex cell, called the sperm, **fertilises** the female sex cells.
- The **fertilised** cell divides into different cells and will form a baby with a beating heart.
- The baby will grow inside the female until the end of the **gestation** period when the baby is born.



Echidnas and platypus are mammals but they lay eggs rather than giving birth to live young.

Plants

Most plants contain both the male sex cell (pollen) and female sex cell (ovules), but most plants can't **fertilise** themselves. Wind and insects help to transfer pollen to a different plant. The pollen from the stamen of one plant is transferred to the stigma of another. The pollen then travels down a tube through the style and fuses with an ovule.



Some plants, such as strawberry plants, potatoes, spider plants and daffodils use **asexual reproduction** to create a new plant. They are identical to the parent plant.

